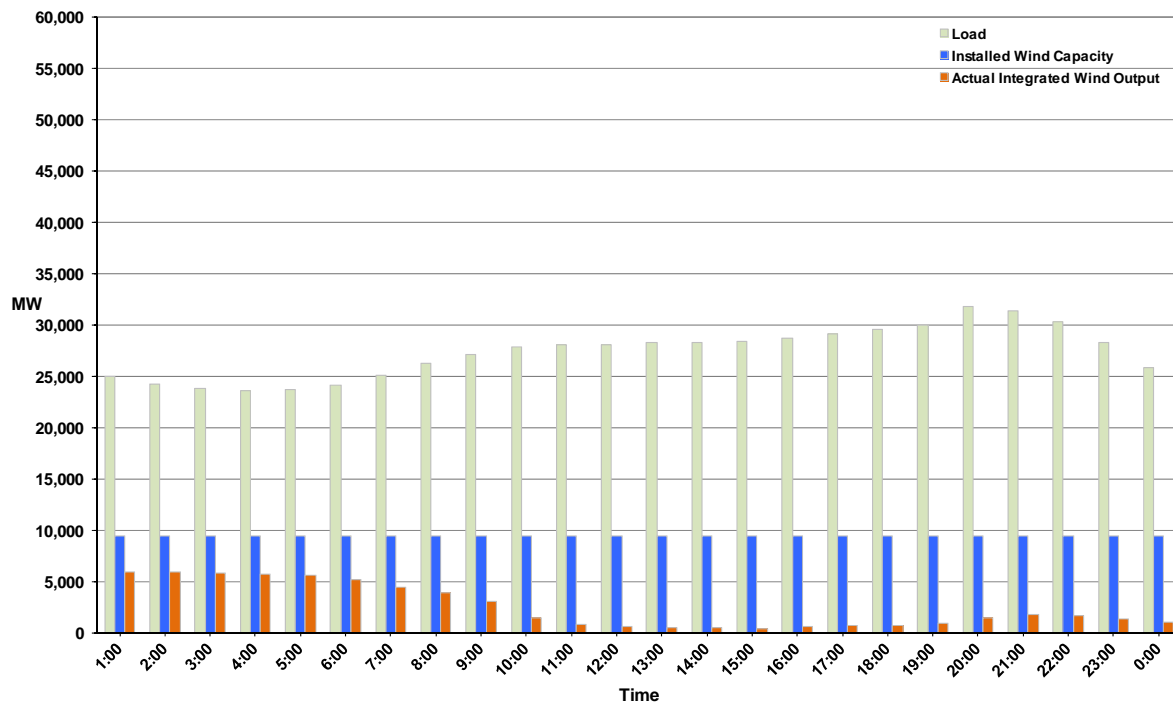




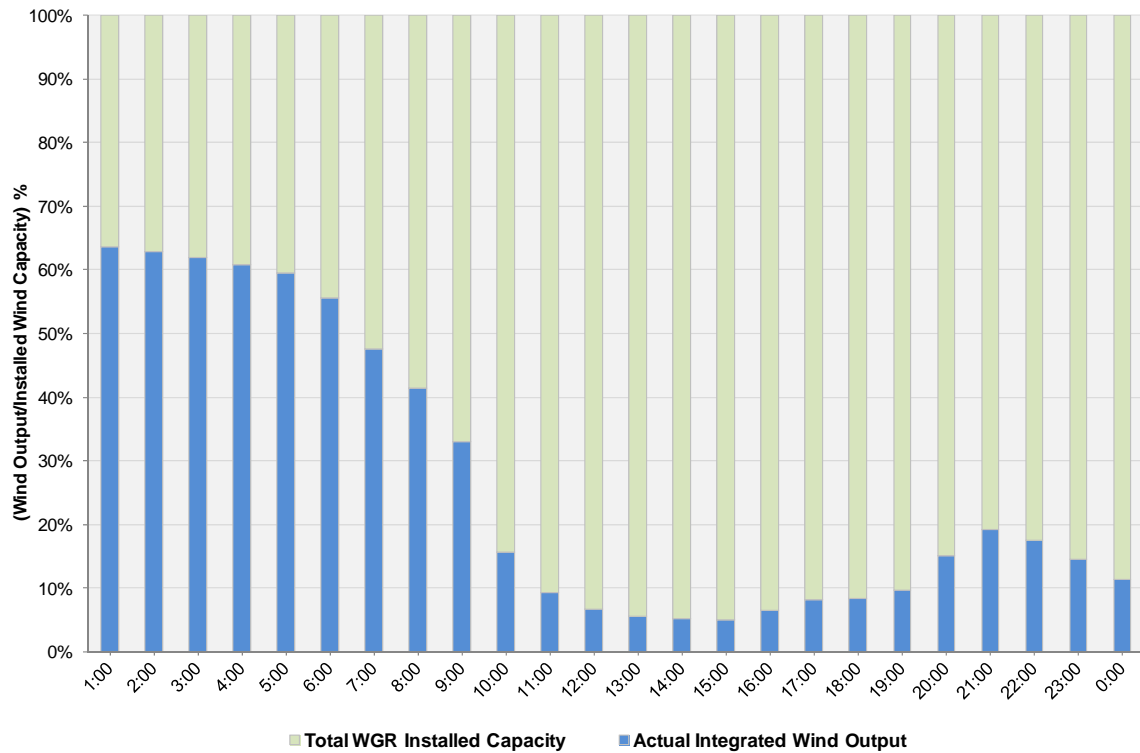
ERCOT Grid Operations Wind Integration Report: 10/30/11

Peak Load	31,811 MW
Load Peak Hour	20
Wind over Peak	1,432 MW
Wind Record 10/07/11	7,400 MW
Max Wind Value	6,083 MW
Wind Peak Time	00:13
Wind Integration %	24.08%

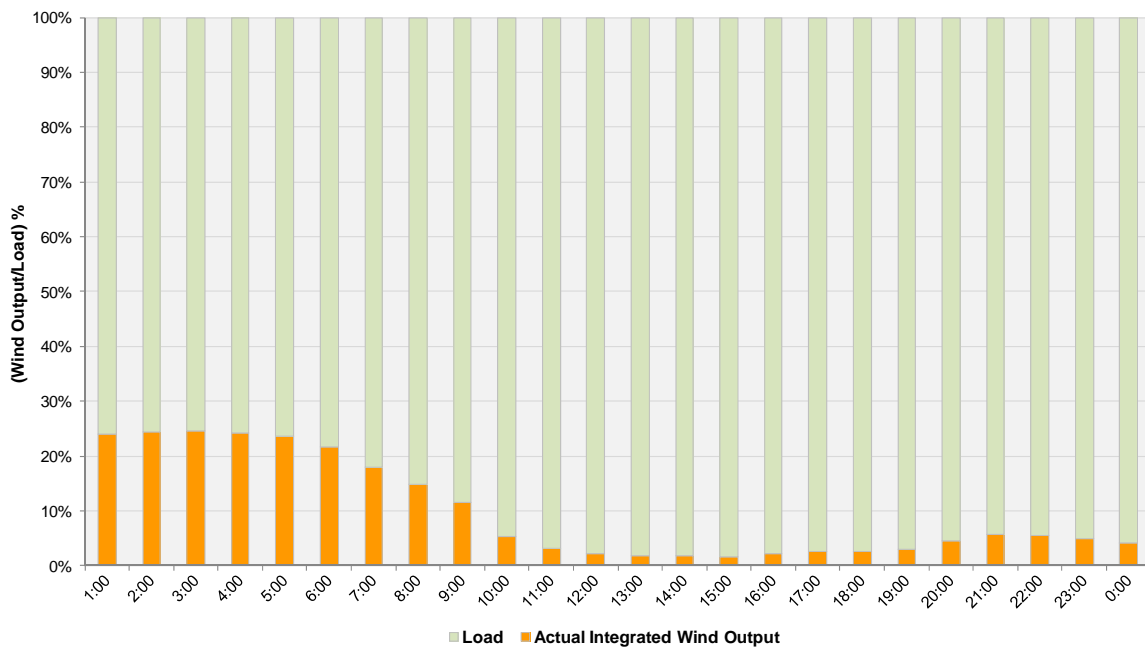
Hourly Average Actual Load vs. Actual Wind Output
10-30-2011



Actual Wind Output as a Percentage of the Total Installed Wind Capacity
10-30-2011



Actual Wind Output as a Percentage of the ERCOT Load
10-30-2011



ERCOT Load vs. Actual Wind Output 10/23/2011 - 10/30/2011

